

# The Los Angeles Cactus and Succulent Society

## Mission Statement:

The Los Angeles Cactus and Succulent Society (LACSS) cultivates the study and enjoyment of cacti and succulent plants through educational programs and activities that promote the hobby within a community of fellow enthusiasts and among the greater public.

## February 2018 Guest Speaker: Stephen McCabe Topic: "Adventures to find Dudleya in the Wild"

Another White Dudleya hybrid



**Stephen McCabe** has been studying and growing *Dudleya* for over 30 years and has been growing other succulents longer than that. He is Emeritus Director of Research for the UC Santa

Cruz Arboretum, a current researcher with the Environmental Studies Department at UCSC, and a botanical consultant. As Curator of Succulents at the Arboretum he built from scratch a collection of over 10,000 succulents at the Arboretum. His interests are in the classification, evolution, ecology, and conservation of *Dudleya* and other plants. As a hobby he hybridizes similar species to

each other within the following groups of plants: *Echeveria*, *Gasteria*, *Dudleya*, and California monkey flowers. Though he has pioneered over 35 first ascents of rock climbs in Yosemite and elsewhere, most of the climbing for botany has been un-rope.



White Dudleya hybrid



Stephen McCabe and Desert Creations will be bringing some plants for the raffle. Raffle tickets are \$1 each, or 6 for \$5.

◀ Floriferous palmeri

**Dudleya, also known as live-forevers, are attractive succulents native from southern Oregon nearly to Cabo San Lucas and the Pacific Islands of California and Baja California. Getting to and identifying some of the cliff-dwelling plants on remote islands can be a challenge. The speaker has been to all of the Channel Islands and most of the Baja California Pacific coast islands. In addition to talking about the species, Stephen McCabe will talk about conservation of the rare species and some tips about growing the plants in California gardens.**

### Inside this issue:

A word from our President	2
What did I miss, I didn't hear	3
POM January results	4
Plant of the Month	5 - 6
Announcements	7 - 8
CSSA Journal - synopsis	9
Timely Tidbits	10

\*All pictures courtesy of Stephen McCabe.

**2018 Officers****President**

Kim Thorpe Chavez

**1<sup>st</sup> VP, Programs**

Ron Behar

**2<sup>nd</sup> VP, Plant of the Month**

Manny Rivera

**3<sup>rd</sup> VP, Special Events**

Diane Miller

**Secretary**

Matt Gatskill

[LACSS.contact@gmail.com](mailto:LACSS.contact@gmail.com)**Treasurer**

Gretchen Davis

**Membership**

Ilona Buratti

**Director 1 (2017-18) Odd Yrs.**

Kal Kaminer

**Director 2 (2016-17) Even Yrs.**

Artie Chavez

**Past President**

Joyce Schumann

**LACSS Show Chair**

Jim Esterle and Artie Chavez

**Fall Sale Chair**

Kal Kaminer

**Webmaster**

Kim Thorpe Chavez

**Librarian**

Joyce Schumann

**Historian**

Nils Schirrmacher

**Cactus Chronicle Editor**

Jose J Villarroel

**Inter-City Show Liaison**

John Martinez

**CSSA Liaison**

M.A. Bjarkman

**Drawing & Plant Procurement**

Richard Roosman

**Member at Large**

Nancy Neymark and Kal Kaminer

**Cactus Garden Chair**

Chris Rogers

**Cactus Chronicle Distribution**

Richard Roosman

John Matthews

**Holiday Party Chairpersons**

OPEN

**Cactus Garden**

Chris Rogers

**Meeting Refreshments**

Sylvia Strehlo

**Monthly Drawing**

Leah Imamura

Juana Williams

**A word from our President**

by Kim Thorpe Chavez

I was so pleased with the turnout at the January meeting. Manny did an excellent job with Plant of the Month. It was followed by a wonderful program by Duke Benadom on Uganda.

It is always a little tough to try new things and make changes but I really feel the new format will work out. So for those who weren't there, please look over the new meeting structure article in this issue. As I emphasized at the meeting, your newsletter is full of great information and I really encourage all of you to read it. You might find a special code word hidden in an article which is good for one free raffle ticket if you say it to me at the meeting.

So we finally got some rain. Our plants sure like the splash of mother nature. It was not too cold, so it was good. Unfortunately, this may cause many of the plants to wake up in the heat. I was beginning to think we weren't going to have any winter at all. Please bring in your questions and/or plants for the "Ask the Expert" section of our meeting from 7 to 7:15 at the front of the room.

I am very excited about the program in February. Our guest speaker will be Stephen McCabe. Please read the write up that follows.

February 18 is our next board meeting, it will be held at Artie's and my home in Canoga Park.

If you would like to attend, please contact me or another board member for information.

Don't forget to wear your name badges and I will see you February 1<sup>st</sup>.

**Kim Chavez****2018 Meeting Structure**

by Kim Chavez

For the next couple of months we are going to try a new time format for our monthly meetings. Basically, we will move the long break in the middle of the meeting to an extended Social Hour before the meeting. We hope that this slightly delayed opening and streamlined meeting structure will make it easier for more members to attend.

**6:00 pm** – Vendors arrive and set up

**6:15 pm** – Members begin arriving

**6:15 – 6:30 pm** – Those bringing snacks set up

**6:15 – 7:15 pm** – Social Hour: purchase plants and pots, preview raffle plants, snack, visit the library. All POM entries should be submitted by 7:15.

-Committee chairs solicit volunteers during this time.

**7:00 – 7:15 pm** – "Ask and Expert" station at the front of the room. Bring in your plants or photos for identification, diagnosis, and growing tips.

**7:20 pm** – Begin short business meeting followed by POM with Manny.

5 minute break before going into the evening program.

Meeting closure with Richard's famous raffle.

All members asked to assist with break down, putting away chairs, and clean up.

**Are you available to help out? Holiday Party Coordinator**

We are sorry Kandie and Don won't be able to continue as our Holiday Party Coordinators. They did a great job for the past 2 years. We would love to fill the position and you are perfect. There is a lot of support from the members, so if you would like to help out please contact Kim 818 679 654 or speak to Kim at the meeting. February code word is Echeveria for a free raffle ticket. See Kim for a ticket at the meeting.

# “What did I miss” or “I didn’t hear that”

by Joyce Schumann

## January, 2018 Meeting

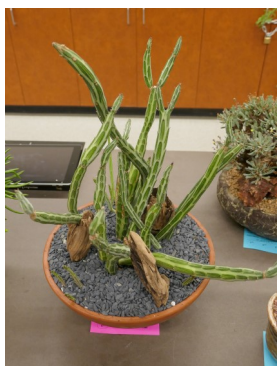
We started our new year with a full house and some great refreshments.

Our new President, Kim, explained the new meeting structure. This should help shorten the time frame for the meetings. So far, it seems to be working. How many of you remembered the “secret” word? (Maybe we should include this feature on an irregular basis to see how many actually read the Chronicle!) Plant of the Month presentation time was compressed a bit by having the winning plants placed on the front table. This also made viewing easier. It seemed as though everyone enjoyed the extra visiting/purchasing/viewing time.

The plant sale at the Oster’s was announced. Call them before you go.

After a short break, Duke Benadom presented his program with the intriguing title. It’s not often we visit a “Lawless” region. The photos of the class 5 rapids on the Nile River put butterflies in my stomach! The country is beautiful if you enjoy the amazing red soil, scrub plants, and many aloes growing right out of the rock. The Opuntias we take for granted are found in this area, also. The rock outcroppings and other formations are incredibly beautiful and rugged.

Duke also supplied some plants for the raffle as did Scott Shaffer and other vendors. The evening ended with a flurry of clean-up activity and we adjourned by 9PM. Hurray!



All the pictures on this page courtesy of Ron Cooper

**Plant of the Month  
2018****February**Coryphantha  
Pelargonium**March**Discocactus  
Fouquieria**April**Lobivia  
Gasteria**May**Small cactus  
staged as miniature  
Small Succulent  
staged as miniature**June**

Favorite for both

**July**Matucana, Oroya  
Echeveria**August**Thelocactus, Hamatocactus  
Adenia**September**Mammillaria Black Spines  
Bursera**October**Espostoa,  
Oreocereus  
Jatropha, Monadenium,  
Pedilanthus**November**Crest, Monstrose  
Crest, Monstrose**December**

Holiday Party!

**Plant of the Month  
2019****January**

To be Announced

**February**

To be Announced

**March**

To be Announced

**Plant of the Month – January 2018****Cactus – Frailea & Blossfeldia****Rookie** --- none ---**Novice** --- none ---**Advanced**

First	Kathryn Boorer	Blossfeldia liliputiana
Second	Barbara Hall	Frailea pseudopulcherrima
Third	Barbara Hall	Frailea schilinzkyana ssp. conceptionensis

**Open**

First	John Matthews	Blossfeldia liliputana
Second	Bryan Chan	Blossfeldia liliputana
Third	-- none --	

**Succulent – Senecio & Othonna****Rookie**

First	Ron Cooper	Senecio cylindricus
Second	Debi Heaps	Senecio talinoides
Third	Debi Heaps	Othonna quercifolia

**Novice**

First	Ron Behar	Senecio stapeliiformis
Second	Al Mindel	Senecio barbertonicus
Third	Ron Behar	Senecio hervei

**Advanced**

First	John Suci	Othonna euphorbioides
Second	Kathryn Boorer	Othonna sp.
Third	Barbara Hall	Othonna euphorbioides

**Open**

First	Kim & Artie Chavez	Othonna tuberosa
Second	John Matthews	Othonna quercifolia
Third	John Matthews	Senecio mveroensis ssp. leptocaulis

**Note:** Total of 47 entries across all categories.  
Please write neatly so spelling is clear.

## Plant of the Month : Coryphantha



*Coryphantha elephantidens*

*Coryphantha* and *Escobaria* are two moderate sized genera (57 and 23 species respectively) of small North American cacti similar in appearance to *Mammillaria* and were originally included in that genus. They share in common a small, mostly globular, stature and an incredible level of cold tolerance, at least in some species. *Escobaria vivipara* and *E. missouriensis* are particularly widespread species covering most of western and midwestern North America. In fact, the native range of *E. vivipara* extends all the way into Canada, a feat matched only by a few species of *Opuntia*. This cold tolerance allows people in even the coldest climates to grow these species outdoors.

While all plants in this group are relatively small, many can form good sized clumps in time (much like *Mammillaria*). Some of the variation between species include having globular plants and more cylindrical, upright plants. Flowers vary from yellow to pink. Some species are covered in dense white spines while others are more sparsely covered, allowing the green body of the plant to shine through. A large number of species produce tap roots. Cultivation is similar to *Mammillaria* and other small cacti. While some members of these genera are renowned for their cold tolerance, keep in mind many species come from warm climates. Of course that isn't much of an issue for us in California, but anyone growing them in cold climates needs to make sure they pick the cold tolerant species.



*Escobaria vivipara*



*Coryphantha minima*

*Coryphantha* and *Escobaria* are two closely related genera that are in turn closely related to *Mammillaria*. In fact many botanists feel that *Escobaria* should not be recognized as a genus, instead lumping all the species in *Coryphantha* itself. This is what the authors of "The Flora of North America", the field guide to all the plants of the USA and Canada, chose to do. To make it even more complicated, there is evidence to suggest that *Coryphantha* shouldn't be a genus either and should all be considered species of *Mammillaria*! *Coryphantha* and *Escobaria* differ from *Mammillaria* largely in flowering on new growth while *Mammillaria* blooms primarily on previous year's growth. *Coryphantha* and *Escobaria* differ from each other only by details of the seeds. Confused yet? Unless you are a botanist it doesn't really matter. The important thing is to learn about these plants and just call them a name you are comfortable with until the botanists sort out the relationship issues. Don't be shocked, however, if one day we are calling all of them *Mammillaria* once again.

# Plant of the Month : Pelargonium

On any street, anywhere in the country, you will find numerous homes growing *Pelargonium* hybrids in their flower beds. In cold weather regions they are annuals but in climates like ours they will live forever with good care. They are popular for their showy flowers that come in a vast array of colors too numerous to list. Most non-experts incorrectly call these plants *Geranium*. They aren't too far off as both belong to the family Geraniaceae, but true *Geranium* species are usually weeds. What few people realize is that there are a large group of true species *Pelargonium* (not hybrids) that are winter-growing succulents well suited for cultivation in California.

These are the plants that our succulent of the month is focused upon. For purposes of our monthly show we also include the very closely related genus *Sarcocaulon* (aka *Monsonia*)



*Pelargonium ferulaceum*



*Pelargonium carnosum*

*Pelargonium* is a genus of approximately 200 species native to the African continent from South Africa to Kenya, even to Yemen. However, almost all the succulent species come from South Africa or Namibia, with the center of diversity being the Cape region. Pelargoniums are mostly winter growing succulents that are well suited for our wet-winter, dry-summer climate in California. During the growing season they have lush green leaves and attractive flowers, while during the summer time some look like dead sticks. The flowers aren't as gaudy as the horticultural hybrids, but any discerning grower will find them quite attractive.

Most species are very easy to grow, if attention is paid to providing an environment very similar to their South African home. Some species, such as *P. echinatum* and *P. triste* are tolerant enough to be naturalized in the ground in Southern California when given good drainage and protected from summer watering. Many species will not go dormant if watered all summer, but the plant health and appearance both suffer. Like most cacti and succulents, when in doubt don't water! The potting mix for Pelargoniums should be well drained, with only small amounts of organic matter, if any. Fertilizer should be applied during good winter growing weather (i.e. not in the summer and not during cold, wet periods). A potting mix recommended by Michael Vassar is 50% pumice, 35% washed builders sand and 15% leaf mold based planter mix. Plants growing under these conditions will stay compact, have thick leaves, and a healthy appearance. A well grown Pelargonium will have leaves that appear to float near thick, rugged stems. If given too much water and fertilizer, they will grow leggy, and the leaves will become soft, large and droop. Plants grown hard will be healthier, and better able to survive hot summers undamaged.

All Pelargoniums need pruning to maintain size and shape. Pinching new growth will make the plants bushy, and develop good trunk structure. Many are self fertile, and seed is easily collected after flowering. Most are promiscuous, and garden hybrids are easily set if more than one species is in flower at a time. Seed collected in the spring and planted in late September to November germinates quickly, and will have an entire winter to grow before going dormant during the summer.



Flowers of *Pelargonium carnosum*

# From the stacks of the Library - Feb 2018

by Joyce Schumann

Currently the library inventory list is being updated with an eye to moving some very old, outdated volumes from the main stacks to the repository in the corner by the kitchen where our old books, journals and other assorted historical documents are kept. Any item in this cabinet is available for viewing by members, but most of it cannot be checked out due to its value or rarity. When complete, the full inventory list will be made available to all members.

The main reason for this updating is to make available space for the five new books we acquired in the past month. Just to tease you a bit, three are authored by Duke Benadom, one is titled *Soft Succulents* by Jeff Moore and one has been donated by a generous member.

In the meantime, please stop by the library table, say hi, ask questions, and **definitely**

## CHECK IT OUT!

See you soon,  
Joyce

---



### Our Early dues winners:

Our winners for the Early Dues Drawing. Thanks to all of you who paid your dues early, and we expect to see some good staging with the wonderful tools they won; Jamie & Debi Heaps, Lurinda Chin, and Ralph Masey.



Be sure to check the **paid list in this Newsletter for your name**. There's time to send in your dues to be included in the Mailchimp email list for future Chronicles & club information. Ilona Buratti

# Membership News

## LACSS Paid 2018 Dues (Thank You)



David & Dori Aberson  
Neville Agnew  
Jackie Azalbanan  
Sean & Carolyn Barth  
Patricia Bates  
Ron Behar  
Alfredo Bergolla  
Duke & Kaz Benadom  
Jennifer Bensi  
Gail Bixby  
M.A. Bjarkman  
Kathryn Borrer  
Ramona Bradbury  
Lisa Brosseau  
Barbara Burnett  
Steve Ball & Mary Carroll  
Rio & Caroline Cernik  
Bryan & Mary Chan  
Sandy Chase  
Kim Chavez LACSS  
President  
Artie Chavez  
Terry & Betty Chevillat  
Lurinda Chin  
Ana Chua  
Angela Clubb (New)  
Bob Coleman  
Ron Cooper  
Ralph & Barbara Crane  
Kristy Darnell  
Patricia Carapellucci  
Linda DAlessandro (New)  
Elliot David  
Carl & Jill Davidson  
Gretchen Davis  
Frank deGreef  
Miguel Delgao

Fred & Carol deVoogel  
Roger Dudley  
Rosemary Ecker  
Jennifer Edward  
Carol Eisenberg  
Marquita Ellias  
Jance & Corky Enslin  
Roxie & Jim Esterle  
Brian Fingerut  
Nicole Flacco  
Efren Florez  
Ricardo Fong  
Ericka Freeman  
Edward Frey  
Phyllis & Steve Frieze  
David Gafrany  
Lisa Gailey  
Harry & Erena Gasabyan  
Carol Gaspar  
Jackline Ghassemain  
Kathy Gogol  
Madelyn Gordon  
Kim Greenblatt  
Barbara & Larry Hall  
Natalie Hall  
Tim Harvey  
Jamie & Debi Heaps  
Melinda Hines  
Karen Holley  
Linda Holub  
Bonnie Ikemura  
Leah Imamura  
Kal Kaminer  
Brenda Kanno  
Jay Kapac  
Roger Kapit  
Aija Kinstler  
Elsbeth Kirkpatrick  
Susan Kushner  
Annie Larsen  
Nicki & Peter Larsen  
David Le  
Johanna Lee  
Randee Leffler  
Norma Lewis  
Karin Luedke  
John Martinez  
Luz Martinez

Ralph Masey  
Sandy Masuo  
John Matthews  
Tom McKenna  
Eric Miller  
Al Mindel  
Woody Minnich  
Kathleen Misko  
Megan Murphy  
Nancy Neymark  
Malynnda Nielsen  
Gene & Larua Oster  
Karen & Martin Ostler  
Valeska Pasqualato  
Eric & Catherine Patterson  
Stacey Phelps  
Susan Phillips  
Rochelle Pinto  
Marvin Retsky  
Gustavo Reyes  
Gerald Richert  
Brigitt Riedel  
Manny Rivera  
Summer Rogers  
Chris Rogers  
Steve Rudolph  
Carol Russell  
Allan Sarkin  
Ralph Sarkin  
Scott Schaffer  
Bob & Alko  
Schick  
Nils  
Schirmmacher  
Joyce  
Schumann  
Dick Shin  
Deborah  
Simpson  
Virginia Snow  
Steven Sobel  
Brent Sprenkle  
Nick & Yevgenya  
Steinhardt  
Leonard Stern  
Richard Strike  
Cindy Stuckey  
Roberta & Howard Suber

Arthur Tamayo  
Erica Van Auker  
Jose Villarroel  
Sonia Villarroel  
Fern Wallach  
Mitzi Zack Walters  
Walt & Maxine Wenger  
Rachel Wilbur  
Kyle Williams  
Brigitte Williams  
Jan Wittenberg  
June Wong  
Thomas Wong  
Peter Zeiler



### Please Note:

Unless you are on this *Paid Dues List*, you will not be on LACSS *MailChimp* Email List. If you think you have paid, & Your Name is not here, drop me a line, or call 818-414-3971 so we can sort it out.

### Ilona Buratti, Membership



# CSSA Journal - Sept - Oct 2017

by M.A Bjarkman

## Synopsis of Selected Articles

### A new species of *Aloe* from the Lúrio Waterfalls in Mozambique

Authors Tom A. McCoy, Antonius JH Rulken and Obety Baptista introduce and describe *Aloe argentifolia*, a new species with silvery-grey leaves that grows in the isolated, mid-river rock outcroppings in the Lúrio River Cataract of northeastern Mozambique. This species with decumbent stems has leaves that turn reddish during the dry season. The flowers are red to reddish orange. *A. argentifolia* is compared to *A. mawii*. It is the seventh described endemic aloe of Mozambique.

### An introduction to cactus areoles part II

In this eleven-page, well-illustrated article, James D. Mauseth discusses spines, glochids, the shoot apical meristem of an areole and diversity of areoles on an individual plant. Among the many interesting observations made, the author writes that “most cactus spines... seem smooth, but studies with scanning electron microscopy show that in many species, the spine epidermis is rough, knobby, or cracked.” In discussing glochids, he states that they “occur only in subfamily Opuntioideae, no other cacti have them” and continues, “Most opuntoid areoles produce their compliment of normal spines first then switch to producing glochids afterward”. In one of his concluding remarks the author comments “For students looking for research projects, I recommend studying the growth and development of cactus areoles. They are so diverse throughout the family that they must hold many clues about cactus evolution and ecology.”

### Book Review: “The genus *Ceropegia*”

Tim Harvey reviews “The genus *Ceropegia*” by Dennis de Kock, a book of 62 pages, over 350 color photos and 23 distribution maps. This book includes two chapters on taxa, a chapter in which species are listed alphabetically with images, a chapter containing maps, a chapter on cultivation which includes a section on grafting, and ends with a bibliography. Although the chapters on species and on maps could be improved, Tim considers this volume an invaluable resource as a reference and recommends that clubs acquire a copy for their library.

### Book Review: “Succulents in cultivation – breeding new cultivars”

Tim Harvey reviews this massive tome of 248 pages by Gordon D. Rowley, with over 400 photos and illustrations of succulent cultivars. As stated in the review, “hybrids are now everywhere and here to stay”. The first part of the book is complimented for its many “useful areas, from taxonomy to evolution, genetics and cultivation”. The second part of the book presents chapters on succulent plant families, starting with Cactaceae, followed by Crassulaceae, both of which receive ample treatment. Following these are chapters on the many other succulent genera. Tim notes that the Epilogue is of interest due to its mixture of pictures of bizarre plants from various families. The bibliography and index at the end will be useful. Pictures of some of the well-known hybridizers and the fact that the quality of the paper and printing is excellent and the binding strong round out the attributes of this book which receives a well-deserved recommendation.

### Obituary: Iris Sheila Collenette (1927-2017)

Tom McCoy reminisces about and gives tribute to Sheila Collenette, a longtime friend of his and a Fellow of the CSSA, who the botanical world recently lost. A full twenty taxa have been named in her honor, including *Aloe collenetteae* and *A. sheilae*. Ms. Collenette had already spent many years botanizing in Borneo when she and her husband moved to Saudi Arabia in 1972. During the next 26 years she devoted herself to listing all the plants found growing within that country. In 1985 her two books, “An Illustrated guide to the Flowers of Saudi Arabia” was published, followed by “Wildflowers of Saudi Arabia” in 1999. By then she had documented over 2,100 taxa for the country. Nine aloes, two ceropegias and a rhytidocaulon were described by Ms. Collenette, mostly in conjunction with John Lavranos.

Additionally, there is an important article (“Molecular analysis of the genus *Eriosyce*”) by Fred Kattermann and Leo Chance continues his series “Pushing the Limits: landscaping with cacti and succulents” with his article #26.

# Timely Tidbits

by Nils Shirmacher

In **February 1993**, an El Nino downpour prevented many members from making the monthly meeting, then held at Odd Fellows Hall on Parthenia. Charles Spotts treated those that braved the storm to an “exciting and educational” talk on *Opuntia*. Also noted in that month’s **Chronicle** were road conditions in Baja: many bridges and highways had been closed due to mudslides.

**February 1971** saw the club traveling south to attend a meeting of the San Diego CSS. After meeting up with members of the San Gabriel and Long Beach societies at the Arboretum, they boarded a bus whose first stop was Avery Cactus Nursery in Escondido. The nursery was a hit, as many “boxes of plants were loaded into the luggage compartment.” Upon reaching Balboa Park, all four clubs gathered to see a presentation on epiphytes by Mr. Clive Innes of England, and snacked on “a wonderful array of cookies and cakes.”

Another trip to San Diego was planned in **February 1962**. By March, the trip would be canceled because its esteemed guides, Doctors Reid Moran and George Lindsay, could not attend. It’s hard not to chuckle at a club trip being canceled due to the absence of these luminaries (anybody own *Echinocereus lindsayi*?) but this was a time when the rank and file rubbed shoulders with experts. One of Mr. Moran’s areas of study was the genus *Dudleya*. His work in the 1950s shaped our contemporary understanding of this local succulent.

These **Chronicles** from February past remind us that now is a great time to see *Dudleya*, *Opuntia*, *Echinocereus*, and others in habitat. They also warn that although the season cools our deserts, coastal highways are in danger of being engulfed by their own habitation.



# Refreshments reminder

## Reminder, It's February – S & T

If your last name begins with the letters listed above, this means YOU. It's your turn to bring the goodies that will sustain us during our meeting on Thursday, February 1st. Please have snacks arrive by 6:30PM for Social Hour.

Help in setting up is greatly appreciated. Some ideas: finger foods, fruit, veggies, chips & dip, cookies, brownies, sandwiches, burritos, pizza...you name it, we will heat & serve it.

Yes, we have a microwave. It's nice to have real food at the start of the meeting, as well as treats during the break. Drinks are also welcome.

Thanks,

**LACSS**

# 2018 Cactus and Succulent Calendar of Upcoming Events

Updated 12/3/17. ANY CHANGES, please email: aloescats1@aol.com

- FEB. 10**            **SAN DIEGO CACTUS AND SUCCULENT SOCIETY, WINTER SHOW AND SALE**  
BALBOA PARK, ROOM 101, SAN DIEGO, CA—INFO 619-990-2051
- MAR. 22-24**        **ORANGE COUNTY CACTUS AND SUCCULENT SOCIETY SPRING SHOW AND SALE**  
THURS. 22<sup>ND</sup> 6-9PM—FRI. MAR. 23<sup>TH</sup> 9-7PM—SAT. MAR. 24<sup>TH</sup> 9-5  
1000 S. State College Bl., (Anaheim United Methodist Church) Anaheim, CA  
INFORMATION CALL 562-587-3357
- APR. 7-8**            **SOUTH COAST CACTUS AN SUCCULENT SOCIETY SHOW & SALE**  
SOUTH COAST BOTANICAL GARDENS, 26300 CRENSHAW BLVD., PALOS VERDES, CA  
INFO: Website: <http://www.southcoastcss.org> // EMAIL: [heidihusnak@gmail.com](mailto:heidihusnak@gmail.com)
- APR. 29**            **HUNTINGTON PLANT SALE 10AM TO 5:00PM / HUNTINGTON BOTANICAL GARDENS,**  
1151 OXFORD ROAD, SAN MARINO, CA. 626-405-3504
- MAY 5-6**            **SUNSET CACTUS AND SUCCULENT SOCIETY SHOW AND SALE**  
VETERANS MEMORIAL CENTER, GARDEN ROOM  
4117 OVERLAND AVE., CULVER CITY, CA. INFO. 310-822-1783
- MAY 6**              **SOUTH BAY EPIPHYLLUM SOCIETY SHOW AND SALE**  
9am to 4pm SOUTH COAST BONTANICAL GARDENS, INFO. 310-833-6823
- MAY 11-12**        **GATES CACTUS AND SUCCULENT SOCIETY SHOW AND SALE**  
FRI & SAT 9-4:30 pm, FOR INFORMATION ON LOCATION PLEASE CALL: 909-910-9195
- MAY 19-20**        **LONG BEACH CACTUS CLUB PLANT SHOW AND SALE**  
10-4 pm RANCHO LOS ALAMITOS, 6400 BIXBY HILL ROAD, LONG BEACH, CA  
INFO. 562-631-5876
- MAY 26-27**        **CENTRAL COAST CACTUS & SUCCULENT SOCIETY**  
ANNUAL SHOW & SALE (10-4PM), LUDWICK CENTER,  
864 SANTA ROSA SAN LUIS OBISPO, CA – INFO. 805-237-2054, [www.centralcoastcactus.org](http://www.centralcoastcactus.org)
- JUNE 2-3**            **SAN DIEGO CACTUS AND SUCCULENT SOCIETY-- SUMMER SHOW & SALE**  
BALBOA PARK, ROOM 101, SAN DIEGO, CA INFO. 858-382-1797
- JUNE 9-10**        **LOS ANGELES CACTUS and SUCCULENT SOCIETY PLANT SHOW AND SALE**  
JUNE 9<sup>th</sup> 9AM – 4PM and JUNE 10<sup>th</sup> 9AM - 3PM  
THE SEPULVEDA GARDEN CENTER, 16633 MAGNOLIA BLVD., ENCINO, CA.  
INFO. [www.lacactus.com](http://www.lacactus.com)

# 2018 Cactus and Succulent Calendar of Upcoming Events

Updated 12/3/17. ANY CHANGES, please email: aloescats1@aol.com

<b>JUN 29-JUL 1</b>	<p><b>CSSA ANNUAL SHOW AND SALE – HUNTINGTON BOTANICAL GARDENS</b></p> <p>1151 OXFORD ROAD, SAN MARINO, CA. Info: 626-405-3504</p> <p>PLANTS SALES STARTS JUNE 29<sup>TH</sup> THRU JULY 1<sup>ST</sup> FROM 10-5pm.</p> <p>SHOW OPENS JUNE 30<sup>TH</sup> THUR JULY 1<sup>ST</sup> FROM 10-5pm.</p>
<b>JULY 19-21</b>	<p><b>ORANGE COUNTY CACTUS AND SUCCULENT SOCIETY SUMMER SHOW AND SALE</b></p> <p>THURS. 19<sup>TH</sup> 6-9pm, FRI. JULY 20<sup>TH</sup> 9am-7pm, SAT. 21<sup>ST</sup> 9-5pm</p> <p>1000 S. State College Bl., (Anaheim United Methodist Church) Anaheim, CA</p> <p>INFORMATION CALL 949-212-8417</p>
<b>AUG. 11-12</b>	<p><b>33<sup>RD</sup> ANNUAL INTERCITY SHOW AND SALE AT THE L.A. COUNTY ARBORETUM</b></p> <p>9am-5pm daily. 301 NO. BALDWIN AVE., ARCADIA, CA.</p> <p>INFO. CALL TOM GLAVICH 626-798-2430 or JOHN MARTINEZ 805-390-2139</p>
<b>SEPT. 1</b>	<p><b>HUNTINGTON BOTANICAL GARDENS SUCCULENT SYMPOSIUM</b></p> <p>ALL DAY AT THE HUNTINGTON. INFO: 626-405-3504</p>
<b>SEPT. 15</b>	<p><b>LONG BEACH CACTUS CLUB ANNUAL PLANT AUCTION</b></p> <p>12-5PM RANCHO LOS ALAMITOS, 6400 BIXBY HILL ROAD, LONG BEACH, CA 90615</p> <p>INFO. 562-631-5876</p>
<b>SEPT. 15</b>	<p><b>LOS ANGELES CACTUS AND SUCCULENT SOCIETY - FALL SALE</b></p> <p>THE SEPULVEDA GARDEN CENTER, 16633 MAGNOLIA BLVD., ENCINO, CA.</p> <p>INFO. <a href="http://www.lacactus.com">www.lacactus.com</a></p>
<b>Oct. 6-7</b>	<p><b>BAKERSFIELD CACTUS and SUCCULENT SOCIETY SHOW &amp; SALE</b></p> <p>SAT. 10AM - 5PM---SUN. 11AM - 3PM ST. PAUL'S CHURCH, 2216 17<sup>th</sup> STREET</p> <p>BAKERSFIELD, CA 93304 FREE ADMISSION &amp; PARKING, INFO 661-831-8488</p>
<b>OCT. 27-28</b>	<p><b>PALOMAR SHOW AND SALE</b></p> <p>SAT 10-5, SUN 10-3, SAN DIEGO BOTANIC GARDENS</p> <p>230 QUAIL GARDENS ROAD, ENCINITAS, CA</p> <p>INFO: <a href="mailto:BritaMiller1@g-mail.com">BritaMiller1@g-mail.com</a></p>
<b>NOV. 10 - 11</b>	<p><b>SAN GABRIEL CACTUS AND SUCCULENT SOCIETY SHOW AND SALE</b></p> <p>9am-4pm BOTH DAYS---LA COUNTY ARBORETUM 310 NO. BALDWIN, ARCADIA, CA</p> <p>INFO: MANNY RIVERA 626-780-6957 or JOHN MATTHEWS 661-714-1052</p>



Mailing Address  
LACSS  
PO BOX 280581  
Northridge, CA 91328

Phone: 818-749-5346  
Website: [www.LAcactus.com](http://www.LAcactus.com)  
Email: [lacss.contact@gmail.com](mailto:lacss.contact@gmail.com)

**February 2018 Guest Speaker: Stephen McCabe**  
**Topic: "Adventures to find Dudleya in the Wild"**

**February Events**

**FEB. 10      SAN DIEGO CACTUS AND SUCCULENT SOCIETY  
WINTER SHOW AND SALE**

**BALBOA PARK, ROOM 101, SAN DIEGO, CA**

**INFO 619-990-2051**